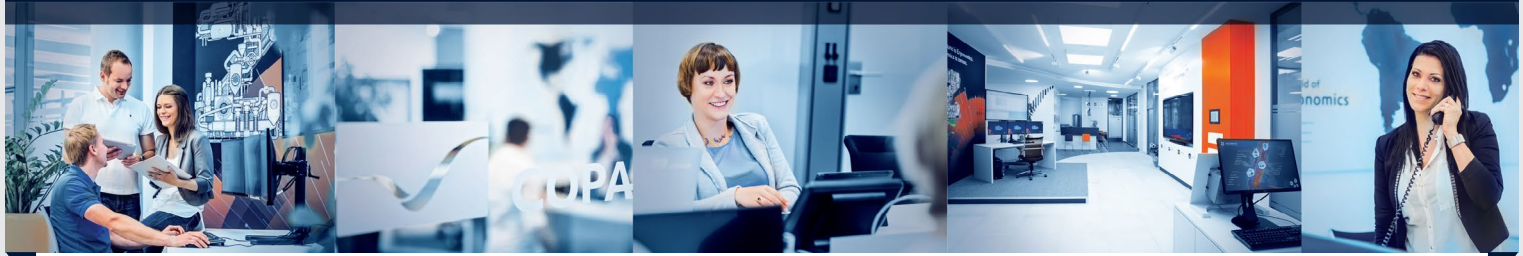




zenon
by COPA-DATA



About COPA-DATA

1987 
founded in Austria

 **100%**
independent
family business

 **155,000**
installed zenon systems
worldwide

11  **Subsidiaries**

18  **Distributors**




4 key industries



more than  **240** **Partners**

 **Local**
Sales Support in
51 countries

The World of Ergonomics

-  COPA-DATA Headquarters
-  COPA-DATA Subsidiaries
-  COPA-DATA Distributors

As at 01/2019

ZENON SOFTWARE PLATFORM

zenon is a software platform that makes the engineering and automated operation of manufacturing and infrastructure equipment incredibly easy. Whether working in manufacturing or in the energy industry, zenon can help you reach and sustain your operational goals.



COMPREHENSIVE SOFTWARE FOR MANUFACTURING AND ENERGY

zenon ensures that equipment runs reliably, flexibly and efficiently. Decision makers, engineers and operators in manufacturing companies and energy distribution are able to connect all relevant areas using this comprehensive software platform, from project creation through maintenance. This results in a notable increase in overall equipment effectiveness.

EMPOWERING PEOPLE

Using zenon, all users – from production through to management – can create synergies and make a sustainable impact on business in a measurable and positive way.

ENABLING THE DIGITAL TRANSFORMATION

The zenon software platform provides one integrated environment that combines data recording, machine operation, and business intelligence. This helps businesses to maintain a competitive edge throughout the digital transformation.



Enhanced features and improved functions

The 2019 release provides numerous improvements and upgrades with the aim of optimizing performance, user-friendliness and, of course, connectivity.

Fast Facts

- ▶ Improved performance thanks to numerous code updates in the background
- ▶ More user-friendly operation in Editor and Runtime
- ▶ Enhanced flexibility in Batch Control
- ▶ Web Engine support for Combined element
- ▶ Web Engine support for Released properties

Continuous performance improvement

Increasingly complex projects with constantly growing data sets can often push the performance of software solutions to the limit. In preparation for the release of zenon 8.10, COPA-DATA took its inspiration from current customer projects to drive intensive improvements. Thanks to the many new measures implemented, the platform is ready today for the challenges of tomorrow. Optimized code in the core components, improved algorithms, and the targeted application of caching functions have resulted in noticeable

improvements in runtime performance. In addition, the start-up time for zenon Editor has been reduced dramatically. In terms of engineering, zenon 8.10 offers developers time savings of up to 97% when bulk processing, for example, lists of variables. This enhancement is based on grouping or sorting variable parameters more efficiently. Version 8.10 also enables spontaneous and triggered archives to benefit from the full power of multi-core systems. As a result, zenon now processes up to 150,000 value changes per second.

Improved user-friendliness



In the Extended Trend Module (ETM) variables can now be added to the display via drag & drop. With zenon 8.10, users will be able to adjust the curve display in runtime. The color of an axis can now be transferred from the curve color (as an option). This prevents visual confusion of the axis and curve, and provides a better overview. The new option of reading values directly off the curve offers the same advantages. The Industrial Maintenance Manager (IMM)

has also been optimized as part of the new version. New filter options such as a time filter or a pop-up maintenance screen improve the look and feel of the software platform. The direct integration of IMM with other zenon modules, such as the Chronological Event List (CEL), further enhances the software's user-friendliness.

Enhancements to the Web Engine

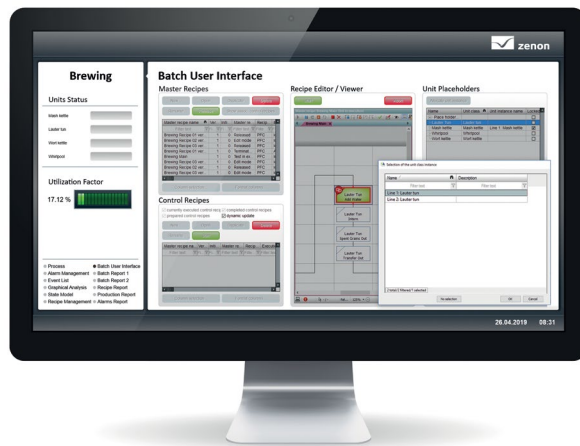
Through the process of continuous improvement, the entire core component of the Web Engine has been upgraded. The move to the .NET core framework provides a strong, platform-independent foundation for the future, and supports the move toward even greater connectivity. In addition, performance has been improved to accommodate the increasing demands on hardware. Depending on the number of elements and screens, the Web Engine in zenon 8.10 is three to four times faster than the previous version. Plus, because the Web Engine now supports the Combined

element, pop-up windows are (as an option) a thing of the past. Users further benefit from a wide range of new graphical options. Alongside the Combined element, the Web Engine also supports Released properties. This generates major time savings in engineering. The application operates exactly the same as in zenon Runtime.





With zenon 8.10, users can also evaluate limit violations and run functions supported by the Web Engine, such as configuring set values or screen switching.

More flexibility in batch-based production

For a more specific configuration, Batch Control in zenon 8.10 offers users more unit classes. Users can now create generic recipes and decide at the start of the process which equipment to use, instead of preparing a separate recipe for each unit. This new approach removes the reliance on specific units, and benefits companies through greater flexibility in batch-based production.



Overview

Performance improvements 	<ul style="list-style-type: none">▶ Faster grouping of parameters▶ Optimized algorithms and caching function
User-friendliness 	<ul style="list-style-type: none">▶ Drag & drop functionality in ETM▶ Match trend curves and axis color▶ Read values directly from the trend curve▶ Integration of IMM with Chronological Event List (CEL)
Unit classes 	<ul style="list-style-type: none">▶ More flexibility in batch-based production▶ Equipment for generic recipes can be set at the start of the process
Web Engine 	<ul style="list-style-type: none">▶ Upgrade to the .NET core▶ Support for Combined element▶ Support for Released properties▶ Reporting of limit violations

For more details about zenon 8.10, please refer to the release notes.

Support & Training

SUPPORT

In zenon there's an extensive help included. Just press F1 while using the zenon Editor or choose "Help" from the Menu. For further support please visit www.copadata.com/support

Here you can also find a FAQ Knowledgebase and the COPA-DATA forum.



TRAINING

Use zenon optimally. COPA-DATA training offers essentials and tailored courses that address specific requirements, helping you become an expert.

Book your trainings at

www.copadata.com/training

